



Product Supervision

Takahiro Amano, M.D.
 Vice President
 Senior Vice-Dean, Postgraduate School
 Professor and Director, Center of Postgraduate Medical Education
 International University of Health and Welfare
 Honorary Director, Sanno Medical Center

Landmark palpation



Identification of "Larrey's point" (left xiphisternal junction) for needle insertion

Training for safe Pericardiocentesis with ultrasound guidance

This simulator allows trainees to insert the needle under ultrasound guidance, pierce the "pericardial sac" and aspirate pericardial fluid.

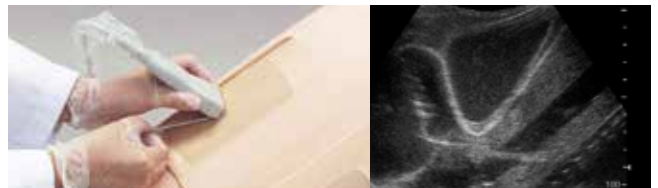
Features

1. Puncture pad is durable and replaceable.
2. Landmarks for palpation and ultrasonic landmarks are prepared to practice the subxiphoid approach and the parasternal approach.
3. Realistic needle tip feeling when the needle pierces the "pericardial sac"

Training Skills

- Patient positioning
- Visualization of pericardial fluid under ultrasound scanning
- Landmark palpation
- Needle insertion to the pericardial space
- Aspiration of pericardial effusion

Ultrasound guided pericardiocentesis



Inserting needle to the pericardial space with ultrasound guidance. Ventricles, ribs, pericardium, liver and main artery can be visualized.

Comparison of MW4, MW15, MW17 and MW4A

| Set Includes: | MW4 | MW15 | MW17 | MW4A |
|---------------------------------------|-----|------|------|------|
| 1 adult chest model | ○ | ○ | ○ | |
| 1 mid-axially line unit | ○ | | ○ | ○ |
| 1 mid-scapular line unit | ○ | | ○ | ○ |
| 1 pericardiocentesis unit | | ○ | ○ | |
| 1 pillow for positioning | ○ | ○ | ○ | |
| 1 explanation model for thoracentesis | ○ | | ○ | |
| 1 instruction manual | ○ | ○ | ○ | ○ |
| Accessories | | | | |
| -1 irrigator | ○ | | ○ | |
| -1 funnel | ○ | | ○ | ○ |
| -1 syringes (50ml) | ○ | ○ | ○ x2 | ○ |
| -1 joint hose | | ○ | ○ | |
| -1 tube with three-way stopcock | ○ | | ○ | ○ |
| -1 plastic jar | ○ | | ○ | ○ |

* Ultrasound machine and needles are not included.